

# Easy-Read Newsletter

## February/March News

In recognition of reconciliation, Enable WA acknowledges the Traditional Custodians of country throughout Australia and their connection to land, sea and community. Enable WA pays respect to Elders past, present, and emerging, and extend that respect to all Aboriginal and Torres Strait Islanders people today.

### COUNCIL OF REGIONAL DISABILITY SERVICES

- Members from regional disability service providers across WA came together for a 2 day conference in Busselton.
- We organised gift bags for everyone that were painted and decorated by our Busselton GAP team. Thank you to everyone who helped out.
- This was a great opportunity to discuss issues our organisations are facing with key people, and create solutions.



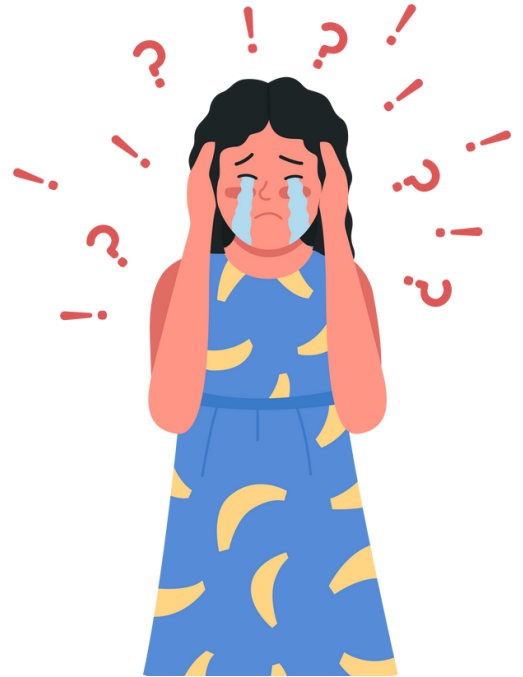
## INCIDENTS AND COMPLAINTS

- There are three (3) ways to record an Incident or Complaint.

1. Go to the Enable WA website, and fill out the form under the 'Contact' Menu.

2. RiskWare (staff only): staff can submit an Incident Report using their RiskWare login.

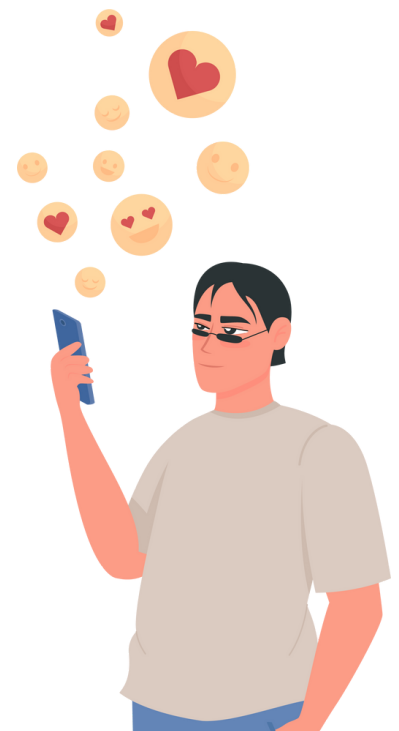
3. If you're not sure about whether an incident requires a report, contact your Service Coordinator or Therapist.



---

## GREAT FEEDBACK FOR LOWER SOUTH WEST

- "Just emailing regarding Johno leaving . Bill really enjoyed his time with Johno and we really appreciated the great things he helped Bill with around the house....Bill's attitude and motivation has improved greatly since Enable's input so a big thanks to all the team". - Gina





## THERAPY SERVICES CAN FIT YOU IN RIGHT NOW

- If you have Therapy or PBS in your NDIS Plan, get in touch with our Therapy team.
- We have a lot of spots available for clients.
- Contact them on [therapy@enablewa.org.au](mailto:therapy@enablewa.org.au) or call on (08) 9792 7500.

---

## MANDURAH CLIENTS WENT FISHING IN FEBRUARY

- 6 of our Mandurah clients got together in February (great job organising, Chavai!), for a fishing experience!
- The fishing rods were kindly donated by Pinjarra Men's Shed (thank you! ), and our Peel office donated the bait and lures.





## WE ARE HIRING

- If you know anyone in Speech Pathology or Occupational Therapy, please put them in touch with [therapy@enablewa.org.au](mailto:therapy@enablewa.org.au).
- If you know anyone looking for a role in Human Resources, please get them to contact our office.

---

## BUSSELTON AND PERTH SOCIAL GROUPS

- If you live in Busselton, you're welcome to join the Group Activities Program.
- If you live in Perth, you are welcome to join the Perth Craft Club.
- Both clubs are on Fridays.
- Contact your Service Coordinator for more information.



## CULTURAL AWARENESS AND SENSITIVITY TRAINING WITH KEIPA BOODJA

- Our first Aboriginal Cultural Awareness and Sensitivity Training workshops are being run on March 3rd at the Bunbury office.
  - Aim is to educate about Aboriginal history, health, family structure so First Nations clients feel more comfortable at Enable.
- 

## CLIENT ADVISORY GROUP

- Apply to join our Client Advisory Group (CAG)
  - Open to clients and family members of clients.
  - Have your say on our procedures, plans for the organisation and more.
  - Your input is appreciated!
  - Contact us on (08) 9792 7500 and say you'd like to apply for CAG.
- 

## NEW BLOGS ONLINE

- We have two new blogs online.
- One is about the recent CORDS meeting.
- The other is about setting your goals for 2023.
- To read them, head to our website ([www.enablewa.org.au/blog](http://www.enablewa.org.au/blog))